

# MAYO CLINIC AND ROYAL BROMPTON

## meet us on challenging case studies!

CME RESIDENTIAL AND STREAMING COURSE

Endorsed by

A I P O

ASSOCIAZIONE  
ITALIANA  
PNEUMOLOGI  
OSPEDALIERI



I T S

ITALIAN  
THORACIC  
SOCIETY



Ancona

June

12<sup>th</sup>-13<sup>th</sup>

2025

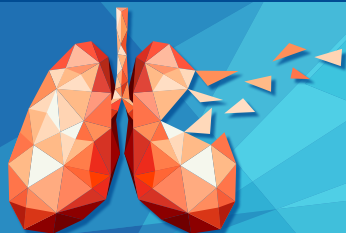
Seeport Hotel

# MAYO CLINIC AND ROYAL BROMPTON

## meet us on challenging case studies!

CME RESIDENTIAL AND STREAMING COURSE

Endorsed by



**Ancona**  
**June, 12<sup>th</sup>-13<sup>th</sup>**  
**2025**  
Seaport Hotel

## Faculty

Katerina Antoniou, Heraklion GR

Misbah Baqir, Rochester MN USA

Francesca Barbisan, Ancona IT

Francesco Bonella, Essen DE

Martina Bonifazi, Ancona IT

Eva M. Carmona Porquera,  
Rochester MN USA

Marina Carotti, Ancona IT

Alberto Cavazza, Reggio Emilia IT

Edoardo Cavigli, Firenze IT

Camilla Comin, Firenze IT

Giorgia Dalpiaz, Bologna IT

Alessandra Dubini, Forlì IT

Richard Hubbard, London UK

Gisli Jenkins, London, UK

Maria Kokosi, London UK

George Margaritopoulos, GR

Isabel Cristina Mira-avendano,  
Abu-Dhabi UAE

Gianluca Moroncini, Ancona IT

Chiara Moroni, Firenze IT

Stephen Murphy, Rochester MN USA

Sara Piciucchi, Forlì IT

Venerino Poletti, Forlì IT

Claudia Ravaglia, Forlì IT

Elisabetta Renzoni, London UK

Ulrich Specks, Rochester MN USA

Moua Teng, Rochester MN USA

Sara Tomassetti, Firenze IT

Laszlo Vaszar, Phoenix AZ USA

Athol U. Wells, London UK

Mark Wylam, Rochester MN USA

Ana C. Zamora Martinez,  
Rochester MN USA

# MAYO CLINIC AND ROYAL BROMPTON

## meet us on challenging case studies!

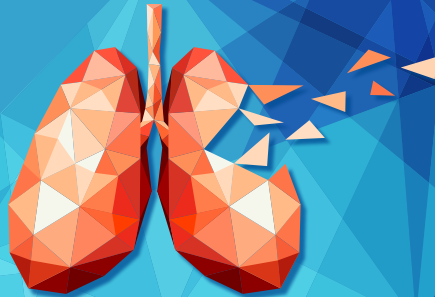
CME RESIDENTIAL AND STREAMING COURSE

Endorsed by

AIPO  
ASSOCIAZIONE  
ITALIANA  
PNEUMOLOGICI  
OSPEDALIERI



I T S  
ITALIAN  
THORACIC  
SOCIETY



Ancona

June

12<sup>th</sup>-13<sup>th</sup>

2025

Seeport Hotel

## Background and rational

The meeting will be focused on Interstitial Lung Diseases, Pulmonary Vasculitis and Oncology, a field in rapid growth, where innovative emerging diagnostic techniques and several novel treatments on the research pipeline are rapidly changing the clinical horizon.

The Pulmonary Case Studies program will provide clinical, radiological and pathology cases that include a history, potential answers, rationale, and relevant references discussed with Mayo Clinic physicians and scientists.

### Learning objectives

- Build knowledge on the best possible current approach to ILD diagnosis and treatment
- Discuss the links between evidence-based knowledge and practice in the care of patients with ILDs
- Recommend interventions based on the risk factors, status, diagnosis and progression of ILDs
- Explore innovative approaches presented by the top world respiratory clinician-scientists
- Compare the roles of healthcare professionals and the contributions they make to the healthcare team in different institutions, settings and countries
- Integrate your clinical and research experience with that of the top world experts in the field

**Ancona**

**June, 12<sup>th</sup>-13<sup>th</sup> 2025**

Seaport Hotel

**MAYO CLINIC AND  
ROYAL BROMPTON**

**meet us on challenging  
case studies!**

CME RESIDENTIAL AND STREAMING COURSE

## Thursday, June 12<sup>th</sup>

10.45-10.50	Welcome and opening session	M. Bonifazi, S. Tomassetti
10.50-11.10	Greetings from Authorities	
11.10-11.20	The Brompton	A.U. Wells
11.20-11.30	The Mayo Clinic	U. Specks

### Fibrotic ILDs and lung cancer

*Chairs: F. Barbisan, S. Piciucchi, V. Poletti*

11.30-11.40	Evolving role of lung biopsies in ILDs and lung cancer	L. Vaszar
11.40-12.25	Fibrosing ILDs and lung cancer, mystery differentials diagnosis	I.C. Mira-avendano
12.25-13.10	IPF, PPF and lung cancer treatment challenges	A.U. Wells
13.10-14.00	Lunch	

### Diagnosis and management of non-fibrotic ILDs

*Chairs: E. Cavigli, A. Dubini, C. Ravaglia*

14.00-14.45	Chronic ILDs	A.C. Zamora Martinez
14.45-15.30	Acute ILDs	F. Bonella

### CTD-ILD

*Chairs: C. Comin, G. Dalpiaz, G. Moroncini*

15.30-15.45	CTD-ILD ERS-EULAR Task Force	K. Antoniou
15.45-16.30	CTD-ILD Screening, Diagnosis and follow-up, best options	E. Renzoni
16.30-17.15	CTD-ILD innovative treatment approaches	G. Margaritopoulos

# Friday, June 13<sup>th</sup>

08.45-09.00 Welcome and opening session

M. Bonifazi, S. Tomassetti

## Genetic diseases

*Chairs: M. Carotti, A. Cavazza, C. Moroni*

09.00-09.30	Diagnostic challenges: genetic testing, lung biopsy: who and when?	E.M. Carmona Porquera
09.30-09.45	New developments in genetic testing	S. Myrphy
09.45-10.30	reatment options, old and new options	S. Tomassetti

## Vasculitis

*Chairs: A. Dubini, G. Moroncini, C. Moroni*

10.30-11.15	MDT diagnosis: clinical-radiological aspects, serology panels, BAL and histopathology	M. Baqir
11.15-12.00	Treatment algorithms	U. Specks

## Smoking related ILDs

*Chairs: M. Bonifazi, A. Cavazza, G. Dalpiaz*

12.00-12.45	Novel diagnostic tool	M. Kokosi
12.45-13.30	Emerging treatment options	R. Hubbard
13.10-14.00	Lunch	

## Early ILDs and ILA, thinking out of the box

*Chairs: E. Cavigli, C. Comin, S. Tomassetti*

14.30-14.45	ILA and early ILDs, a proposal for a clinical research consortium	G. Jenkins
14.45-15.30	ILA and early ILDs, clinical management	G. Jenkins

*Chairs: F. Barbisan, M. Bonifazi, S. Piciucchi*

15.30-16.15	Lung Transplant, critical issues on lung biopsy and transplant management	M. Wylam
16.15-17.00	Rehabilitation, telemedicine, innovative tools	M. Teng

The CME learning questionnaire will be delivered digitally

## SCIENTIFIC RESPONSIBLE / SCIENTIFIC COMMITTEE

### **Prof.ssa Martina Bonifazi**

Full Professor of Pulmonary Medicine  
Department of Biomedical Sciences  
Università Politecnica delle Marche

Head of Interstitial lung diseases, pleural diseases and adult bronchiectasis  
Azienda Ospedaliero-Universitaria delle Marche di Ancona

### **Prof.ssa Sara Tomassetti**

Associate Professor of Pulmonary Medicine  
Head of Interventional Pulmonology Unit  
Department of Experimental and Clinical Medicine  
Azienda Ospedaliero-Universitaria Careggi di Firenze

## OFFICIAL LANGUAGE

English

## COURSE VENUE

Seeport Hotel  
via Rupi di Via XXIX Settembre, 12 - 60122 (AN)

## CONTINUING MEDICAL EDUCATION

Course included in the SINTEX SERVIZI 2025 CME Plan  
Standard Provider ID 4921  
ID Code: 448733

For the purpose of the attestation of CME credits, the actual attendance of participants of 90% of the total duration of the training event is required

Training objective 3: Clinical documentation.

Clinical, diagnostic and rehabilitation pathways - care profiles

CME Credits: 12

In-presence participants: 80

Professional profile: Surgeon

Disciplines: Respiratory Diseases, Geriatrics, Immunology, Internal Medicine,  
Pathological Anatomy, Radiology, Rheumatology

Provider ECM 4921  
Segreteria Organizzativa

**sintex**

*Un modo nuovo di comunicare in Sanità*

via San Gregorio, 12 - 20124 Milano  
✉ info@sintexservizi.it - 🌐 www.sintexservizi.it

SEGUICI SU   